

THE COMMON  
PLAYERS

EXETER  
NORTHCOTT  
THEATRE

"THE BEST NEW PLAY  
OF THE DECADE"  
THE TIMES

THE COMMON PLAYERS IN ASSOCIATION WITH EXETER NORTHCOTT THEATRE PRESENT

# JERUSALEM

BY JEZ BUTTERWORTH  
DIRECTED BY ANTHONY RICHARDS



The multi-award winning play, reimagined  
as a touring musical and festival event

[www.newjerusalem.org.uk](http://www.newjerusalem.org.uk)

## MARKETING PACK



## ***Contents:***

About Common Players and Exeter Northcott Theatre

Brochure Copy

Target Markets

Key Selling Points

Marketing Tools

Box Office Briefing Sheet

Key Words

Quarter Page Advert Template

Cast Biographies

Tour Dates and Promoter Contact Details

Media Release

Cast and Production Team List



*Jerusalem is collaborative project with The Common Players and Exeter Northcott Theatre*

## **The Common Players**

Since 1989, Common Players have been providing theatre productions and activities for communities of the South West, particularly for people with limited access, to see and interact with professional theatre. ....we exist to enable the magic of performance to happen.

Common Players is currently undergoing some exciting new changes in organizational shape and substance, including developing this website. We're not idle in the physical world whilst work is happening in the virtual world. We continue to connect with people through theatre productions and activities for rural communities of the South West. We believe that theatre is for everybody so our particular focus is on working with and for people with limited access, to see and interact with professional theatre.

[www.common-players.org.uk](http://www.common-players.org.uk)

## **Exeter Northcott Theatre**

Exeter Northcott Theatre is a 460 seat venue serving Exeter and the heart of Devon from its home on the University of Exeter Streatham Campus. We offer a mixed programme of touring theatre productions, contemporary dance, opera, music, comedy and family shows to our catchment area of 551,000 homes.

Our aim is to be a creative leader for Exeter and the rest of Devon, offering a highly regarded platform for the best work by emerging and established local, regional, national and international artists. This means that whenever you plan to visit the theatre you will find an exciting mix of the best dance, drama and family theatre, spiced with a healthy dash of comedy, music and personal appearances.

[www.exeternorthcott.co.uk](http://www.exeternorthcott.co.uk)

Common Players in association with Exeter Northcott Theatre present

# JERUSALEM

By JEZ BUTTERWORTH

Directed by ANTHONY RICHARDS

**The multi-award winning play, re-imagined as a touring musical and festival event.**

## Short Copy

On the morning of the local country fair, Johnny 'Rooster' Byron, local waster and modern-day Pied Piper, is a wanted man. The council officials want to serve him an eviction notice, his son wants to be taken to the fair, a father wants to give him a serious kicking, and a motley crew of mates wants his ample supply of drugs and alcohol.

## Long Copy

JERUSALEM premiered at the Royal Court Theatre, London in 2009 and became the Evening Standard's Best Play of the Year. In part a lament about the erosion of country life and in part a rebuff to the antiseptic modern world, JERUSALEM charts the chaotic and hilarious events over the 24 hours of a local mid-summer festival.

Our NEW JERUSALEM project takes this indoor play and plants it outside, working with local promoters throughout the Westcountry to create a series of mini Midsummer festivals with the play at its centre. Each event will be unique, created in collaboration with the communities we're travelling to. Expect live music from local bands together with anything from morris dancers to slideshows, hot food to cold local cider. It's a chance to socialise through the evening and into the night, with a fantastic play at the heart of it all.

*This is an outdoor event with no formal seating so please bring blankets, cushions and picnic mats. Food and drink will be available to purchase at all events. No glass permitted on site. Age 14yrs+ Contains strong language.*

[www.newjerusalem.org.uk](http://www.newjerusalem.org.uk)

Twitter: @newjerusalemdev

Facebook: newjerusalemdevon

*Praise for Jez Butterworth's JERUSALEM:*

**"A wonderful, rollicking, dark comedy about contemporary life in rural England"**

FINANCIAL TIMES

**"Unarguably one of the best dramas of the twenty-first century"**

THE GUARDIAN

**“A bold, ebullient and often hilarious State-of England or (almost) State-of-Olde-England play”**

DAILY TELEGRAPH

## CAST BIOGRAPHIES



### ***Rooster***

#### **John O'Neill**

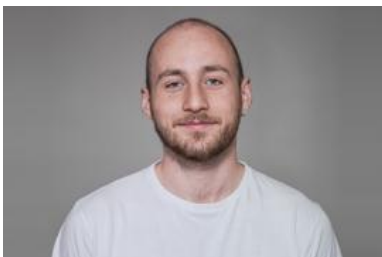
John trained at what is now the Royal Central School of Speech & Drama and has been in and out of the business for far longer than he cares to remember. John has worked all over the place including “Buddy” and “She Loves Me” in the West End, “West Side Story” at the National Theatre of Kenya, leading roles in “The Bill” and bits in “Black Books” and “Doc Martin” on TV, as well as “Hell Fire Corner” and “Barabas” (The Jew of Malta) at Hall for Cornwall. Most recently John has been in several short films, two of which won audience awards at separate festivals. He is really excited to be working on this play with such a great bunch of people.

*Favourite place in Devon - The Hole in the Wall, Torquay*



### ***Phaedra***

#### **Bryony Maguire**



### ***Lee***

#### **Dean Elliott**

A South West based performer, Dean's previous work includes performances with the award winning You Me Bum Bum Train, and as the lead in 'Skin Deep' with Substance and Shadow Theatre Company. He also creates and performs his own solo work and is currently working on his next show 'The Assistant'. His first show 'Blank' premiered at Exeter's Ignite Festival in 2013 and was reviewed as "extremely enjoyable to watch". He's delighted to be working on his favourite play, 'Jerusalem', with such a great team of people!

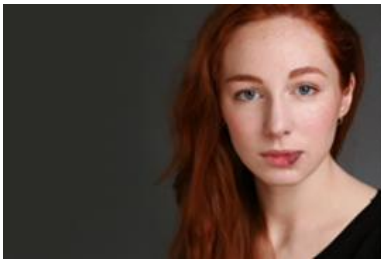
*Favourite place in Devon: The Coastal Railway*





***Davey***  
**Tony Leech**

Tony has acted and played music in various shapes and forms around the South West, and beyond, since a young age. Last year he took an original musical, co-written with his two brothers, to the Edinburgh Fringe Festival - which remains one of his proudest (and most tiring) achievements. Tony has also composed music for local theatre and film, most recently for Somerset-based short film *Walking Shadow*, as well as an updated production of *As You Like It*, set in 1970.



***Tanya***  
**Tessa Gaukroger**

A South-West based actress and performer, Tessa tours nationally with her acclaimed comedy duo, "O'Shea & O'Gaukroger". Past credits include performances at the Edinburgh Fringe Festival, *Hen & Chickens* London, Soho Theatre and Shakespeare's Globe.

*Favourite Place in Devon: Turf Locks.*



***Pea***  
**Lydia Vincent**

Lydia is currently a first year student studying English at the University of Exeter. She is passionate about acting, writing and playing music.

*Favourite place in Devon: The Ness in Shaldon*



***The Professor***  
**Geoff Nicholson**

Geoff was a Headteacher for 17 years, before leaving to work in 9 countries, including Brazil, Kenya and South Korea. He now spends one day a week at Tiverton CAB helping people with debt problems.

*Favourite place in Devon: Baggy's (RIP), Croyde*



**Troy**  
**Conor Magee**

Northern Irishman, Conor Magee was Head of Expressive Arts at Dawlish Community College before retiring from teaching. He has worked with deaf and hearing actors and has participated in a number of community projects and educational videos. Conor has lived and worked in Devon for many years.

*Favourite place in Devon: He is particularly fond of the Cockwood area on the Exe Estuary.*



**Chorus**  
**Jasmine Brown**

Soon to be an Exeter Drama graduate, Jasmine is aspiring to become a professional actor, writer and videogame developer. She has a thirst for the world and loves exploring new countries. However, Devon's beauty holds a very special place in her heart.

*Favourite place in Devon: Dawlish Warren or Teign Valley.*



**Chorus**  
**Mickey Robinson**

Micky participated in the actor workshops offered as part of the New Jerusalem Project. This was his first return to acting since high school and he found he truly loved the experience.

*Favorite place in Devon: Postbridge*

# JERUSALEM TOUR DATES & PROMOTER CONTACT DETAILS

## EXETER

### **Rougemont Gardens**

Tues 27 - Sat 31 May 8pm

BSL Interpreted performance - Thurs 29 May

---

Katherine Scott, Jenny Hogg, Tanja Bartlett

[marketing@exeternorthcott.co.uk](mailto:marketing@exeternorthcott.co.uk)

01392 223 988/989/991

## DULVERTON

### **Knackershole Barn, West Knowle**

Fri 6 June 8pm

----

Steve Hall

[steve@knackershole.com](mailto:steve@knackershole.com)

01398 323837

## TORQUAY

### **Torre Abbey, The King's Drive**

Sat 7 June 8pm

---

*Martin Hoare*

[martin.hoare@torbay.gov.uk](mailto:martin.hoare@torbay.gov.uk)

01803 293593

## KENTISBEARE

### **Glimsters Farm**

Fri 13 June 8pm

---

*Alan Boxer*

[alanboxer@aol.com](mailto:alanboxer@aol.com)

07980981656

## HATHERLEIGH

### **Community Centre**

Sat 14 June 8pm

---

Lisa

[centre@hatherleigh.org](mailto:centre@hatherleigh.org)

01837 810239



**MORETONHAMPSTEAD**

**The Sentry**

Fri 20 June 8pm

---

Andrea Foxwell

[andrea.foxwell@btinternet.com](mailto:andrea.foxwell@btinternet.com)

07870 142393

**LEWDOWN**

**Coombe Trenchard**

Sat 21 June 8pm

---

Frances Girling

[francesgirling@middleraddon.co.uk](mailto:francesgirling@middleraddon.co.uk)

01566 783505

**NEWTON ABBOT**

**Hannah's at Seale-Hayne**

Sun 22 June 7.45pm

---

Matt Newbury

[matt.newbury@discoverhannahs.org](mailto:matt.newbury@discoverhannahs.org)

01626 325800

**CREDITON**

**Shobrooke Park**

Sat 28 June 8pm

---

Rosemary Stephenson

[rosemary.stephenson@virgin.net](mailto:rosemary.stephenson@virgin.net)

01363 773260

**Tickets: £10**

**Exeter Fri & Sat Party Nights: £12**

**Concs: £2 off, available via**

**Box Office: 01392 493 493 \***

**[www.exeternorthcott.co.uk](http://www.exeternorthcott.co.uk) \***

**and through community locations**

*\* a £2 fee applies to all payments over £10 made by card or cheque*

# MEDIA RELEASE

From Common Players, in association with Exeter Northcott, a new production, of Jez Butterworths'

## Jerusalem

---

**Thurs 29 May - Sat 31 May 8pm**  
**Rougemont Gardens, Exeter**

**Then on tour to 8 Westcountry communities until Midsummer's Day**

From Common Players, in association with Exeter Northcott Theatre, a new production of Jez Butterworth's critically acclaimed play, **Jerusalem**, will tour the WestCountry in May and June. The new production will be made in a new way which will involve local artists and communities and teach new skills to those involved.

First performed in 2009, **Jerusalem** became the Evening Standard's Best Play of the Year and is an epic and heroic play about our great British need for a connection with the landscape and our roots; an underpinning theme of the 2012 Olympic opening ceremony.

In part a lament about the erosion of country life and in part a rebuff to the antiseptic modern world, **Jerusalem** charts the chaotic and hilarious events over the 24 hours of a local mid-summer festival. Imagine Midsummer Nights' Dream populated with characters straight out of Shameless and Skins.

*'Refreshing, humane, touching and wickedly funny.'* **London Evening Standard**

The New **Jerusalem** project will take this indoor play and plant it outside, locating its roots in and around the communities of the Westcountry. Common Players and Exeter Northcott Theatre are creating a new midsummer event with the play at its centre, and they are seeking out both old and new audiences who want to come to an engaging event with a moving story at its heart.

Anthony Richards, Director, said, *"Over 120 people have come forward to be involved in New Jerusalem. It's a big experiment to see how epic and large-cast theatre can be crafted and presented locally, in the fields and forests of the area. I'm inspired by the wealth of talent that exists around us and I'm excited about building on Common Players heritage of outdoors shows by taking a great play which can startle and surprise people, to be part of a locally owned event.*

*We're very lucky to be working with some great local artists like Braunton sculptor Jon Rodney-Jones and Kentisbeare Musician Alan Boxer, and the theatre-making experience embedded in Exeter Northcott. It's a great development opportunity for skilled and energetic local artists to come together and create something engaging, fun and connected to our time and place. Conceived, cast, created and consumed in Devon; high quality local produce, using the best local ingredients. "*

**-ends-**

For more information, please contact Jenny Hogg on 01392 223 989 or email her at [j.l.hogg@exeter.ac.uk](mailto:j.l.hogg@exeter.ac.uk)

### **Notes to editors**

***Jerusalem*** is a play by Jez Butterworth that opened at the downstairs theatre of the Royal Court Theatre in London in 2009. The production starred Mark Rylance as Johnny 'Rooster' Byron and Mackenzie Crook as Ginger. After receiving rave reviews its run was extended. In January 2010 it transferred to the Apollo Theatre.

Since 1989, ***Common Players*** have been providing theatre productions and activities for communities of the South West, particularly for people with limited access, to see and interact with professional theatre. ....they exist to enable the magic of performance to happen.

***Exeter Northcott Theatre*** is a 460 seat venue serving Exeter and heart of Devon from its home on the University of Exeter Streatham Campus. They offer a mixed programme of touring theatre productions, contemporary dance, opera, music, comedy and family shows.

# CAST AND PRODUCTION TEAM

<b>Rooster</b>	John Macneill
<b>Troy</b>	Conor Magee
<b>Mr Parsons</b>	Andy Snell
<b>Ms Fawcett</b>	Sian Kinrade
<b>Wesley</b>	David Hill
<b>Ginger</b>	Gareth Evans
<b>Dawn</b>	Jo Portingale
<b>Tanya</b>	Tessa Gaukroger
<b>Pea</b>	Lydia Vincent
<b>Professor</b>	Geoff Nicholson
<b>Davey</b>	Tony Leach
<b>Lee</b>	Dean Elliott
<b>Phaedra</b>	Bryony Maguire
<b>Marky</b>	Sebastian Richards
<b>Chorus</b>	Donna Bullion
<b>Chorus</b>	Grace Plant
<b>Chorus</b>	Isobel Glauce
<b>Chorus</b>	Jasmine Brown
<b>Chorus</b>	Micky Richeson
<b>Chorus</b>	Colin McCormick
<b>Director</b>	Anthony Richards
<b>Assistant Director</b>	Grace Swordy
<b>Associate Producer</b>	Fin Irwin
<b>Associate Producer</b>	Sophie McCormack
<b>Assistant Producer</b>	Tim Bradbeer
<b>Production Manager</b>	Dom Jeffery
<b>Wardrobe Designer/Supervisor</b>	Beth De- Tisi
<b>Musical Director</b>	Alan Boxer
<b>Stage Manager</b>	Evered Woodward
<b>Technical Stage Manager</b>	Hannah Rowley
<b>Chief Electrician</b>	Chris Davis
<b>Technical Apprentice</b>	Will Tippett
<b>Voice Coach</b>	Charlie Hughes D'Aeth
<b>Musical Animateur</b>	Colin Wilson
<b>Set Builder</b>	Jon Rodney-Jones
<b>Marketing Director</b>	Katherine Scott
<b>Website Editor/Media Officer</b>	Jenny Hogg
<b>Project Evaluation</b>	Mischa Eligoloff

